

# SEIZURE ALERT DEVICES

AVAILABLE  
FOR WESTERN  
AUSTRALIANS

2023



SUPPORTING  
WESTERN  
AUSTRALIANS  
LIVING WITH  
EPILEPSY

# SEIZURE ALERT DEVICES

AVAILABLE  
FOR WESTERN  
AUSTRALIANS

# 2023

[epilepsywa.asn.au](http://epilepsywa.asn.au)

The Niche, 11 Aberdare Rd  
Nedlands 6009 Western Australia

**1300 660 880**

[epilepsy@epilepsywa.asn.au](mailto:epilepsy@epilepsywa.asn.au)

Follow us on Facebook  
and Instagram @epilepsywa

Become an Epilepsy WA member to  
access our seizure alert device loans\*

\*Terms & conditions apply

## CONTENTS

From Our CEO.....	4
Introduction .....	5
Which Seizure Alert Device is Best For My Epilepsy? .....	7
Epilepsy Specific Device – Watch with Phone App .....	8
Epilepsy Specific Device – Day Wear .....	9
Epilepsy Specific Devices – Bedtime Use .....	10
Bedtime Use .....	12
Baby & Child Monitors .....	15
Fall Detectors .....	17
Smartphone & Watch Apps .....	20
Comparison Table .....	23

*Disclaimer: Epilepsy WA does not endorse any of the products or apps listed in this reference guide and is not a manufacturer, distributor, seller or promoter of the products shown. Epilepsy WA offers only introductory information about the potential of these devices and apps from product suppliers and does not accept responsibility for the consequences of the actual use of any device or app listed. Consumers are encouraged to compare products and make an informed choice prior to use or download and to confirm item particulars and pricing, including shipping, with the relevant supplier before placing any order.*

## FROM OUR CEO

EMMA BUITENDAG



**Epilepsy WA has been working tirelessly behind the scenes to meet the needs of Western Australians living with epilepsy for 60 years.**

As part of our epilepsy education, awareness-raising, risk reduction and support services, we're proud to have created Australia's largest display of seizure alert devices readily available to Western Australians.

We've also collated the largest loan libraries of key seizure alert devices and children's books on epilepsy to further support our WA community.

This new Seizure Alert Devices booklet is a comprehensive guide of helpful options for those living with the chronic neurological disorder, their caregivers, family, friends and supporters.

We've taken this initiative to help reduce risk of injury and harm from epilepsy in WA - to help provide increased peace of mind and improve mental, emotional and physical health outcomes for all affected.

Everyone's journey and experience with epilepsy is different, and there are more than 40 different types of seizures. At Epilepsy WA we provide support at all touchpoints along the way as we acknowledge it can be difficult for everyone involved, and that individuals' needs and level of support required can change over time.

We welcome feedback and reviews of our seizure alert support services and products featured to help us continuously improve the health and lives of the 1 in 25 impacted by epilepsy and their support networks.

We're here for you every step of the way, and our charity especially welcomes new members to join our organisation to gain the benefit of our loan library services and to tangibly help us continue to build our service capacity.

## INTRODUCTION

**Thankfully there are now many seizure alert device options available to Western Australians providing practical support, increased sense of independence and increased peace of mind for individuals living with epilepsy, and for those caring for loved ones diagnosed with this chronic neurological disorder.**

A growing range of these monitoring and alarm devices offer a variety of technological features and differing degrees of sensitivity and reliability, so each seizure alert product featured here should be evaluated and compared to determine its suitability for individual needs and seizure types.\* (There are also a multitude of general fall detectors and non-seizure detecting baby monitors on the market.)

We recommend that seizure alert devices are considered as just one part of an overall risk reduction strategy, and that reducing your risk and achieving best practice epilepsy management is a discussion best had with your treating doctor. Some of these devices generate useful data which can be provided to your doctor or specialist for use in helping to determine treatment options. If you would like to find out about how you can reduce your risk of accident or injury caused by epilepsy visit: [epilepsywa.asn.au/risk](http://epilepsywa.asn.au/risk).

Epilepsy WA has Australia's largest collection of seizure alert technology device options on display in our Nedlands office, and our charity also offers a free Emfit Epilepsy Safe-Bed Sensor loan service for evaluation purposes for our member supporters. We also loan out a limited number of NightWatch devices to our WA member families for use by children and young people (both devices are subject to availability, and terms and conditions apply). Call us on 1300 660 880 for more information or to book an appointment with our inhouse nurse to view these seizure

# INTRODUCTION CONTINUED

alert and monitoring devices, and to join us as a member to access the free loan system and support our work to provide essential epilepsy services in WA.

On our website you'll find recorded information sessions about the Empatica Embrace Watch, NightWatch armband, EpiHunter Headset and the SAMi-3 Camera Monitor, as well as a recent Epilepsy WA conference talk which showcases multiple devices. These can be viewed online at: [epilepsywa.asn.au/seizure-alert-technology](http://epilepsywa.asn.au/seizure-alert-technology). (Other webinars will be added over time.) Also on our website [epilepsywa.asn.au](http://epilepsywa.asn.au) you'll find other epilepsy support services including our Seizure Head Protection display, and details of our network of metropolitan and regional support groups.

Epilepsy WA offers training for individuals, families and groups in Understanding and Managing Epilepsy, and Administration of Emergency Medication online, in person and via live video link. We can also provide our members with access to a children's loan library of books on epilepsy - options can be viewed on our website in our Services section and ordered via our office.

*\* While the new Apple Watch 8 has health indicator monitoring plus hard fall detection features, the products in this booklet are generally considered more seizure alert specific.*

## WHICH SEIZURE ALERT DEVICE IS BEST FOR MY EPILEPSY?



### Life Minder

A Fall Detector alarm with SMS alerts



### NightWatch

Seizure monitor is for nocturnal epilepsy



### Emfit Epilepsy

Safe-Bed Sensor



### Medpage MP5V2

Specialist Monitor for Seizure Movement



### Embrace2

by Empatica



### SAMi-3 Camera

Sleep Activity Monitor



### Owlet Smart Sock

For babies and kids, plus heart rate and oxygen sensor



### Nellcor™ Bedside

SpO<sub>2</sub> Patient Monitoring System



### EpiHunter

EEG Headset for focal onset impaired and absence seizures

## Embrace2 by Empatica

RRP **\$373** approx.  
+ subscription plan  
8% discount code available  
from Epilepsy WA

[empatica.com](http://empatica.com)



*\*Please note that some apps may have limitations and may lack independent testing.*

**The Embrace2 Watch by Empatica detects possible tonic-clonic seizures lasting longer than 20 seconds and alerts caregivers. When it detects such seizure activity via its four sensors the watch calls and sends an SMS alert advising of the seizure and the wearer's GPS location to the caregiver's mobile phone.**

The Embrace2 does not prevent nor predict seizures, or monitor heart rate. It can monitor sleep quality, physical activity levels and rest statistics, and act as a seizure diary via a free Mate App for users which works with its Alert App to enable captured data to be viewed.

The watch has four sensors which enable it to detect seizure activity through different physiological indicators (Electrodermal Activity, Temperature, Accelerometer and Gyroscope).

The Embrace2 works by transmitting data collected to a paired smartphone via Bluetooth connection so a nearby compatible smartphone and either an internet or cellular data connection is required.

Suitable from the age of six upwards, the watch has 48 hours + of battery life, and a 30-minute charge powers up a full day's use.

A running belt to carry the smartphone is recommended to ensure the devices remain within range. It comes with interchangeable bands and is water-resistant up to one metre but is not suitable for use in saltwater. The watch is compatible with Apple and android smartphones and Bluetooth.

Monthly subscription costs vary depending on plan types, from approx. \$14.84 AUD.

## EpiHunter EEG Headset

RRP **\$1,220-\$2,095**

[seizurealertaustralia.com.au](http://seizurealertaustralia.com.au)  
NDIS registered



**This headset seizure alert device was originally created to be used in a classroom setting so a teacher could be alerted to a student's non-convulsive seizure. A torchlight feature on a student's smartphone sitting on a desk lights up when a absence seizure or focal onset impaired awareness seizure is detected.**

The EpiHunter consists of a wearable EEG headband (BrainLink Lite v2) and an Epihunter Core smartphone app (available for Android only). EpiHunter's smartphone app uses brainwaves information from the EEG headset to automatically detect, signal and log seizures in real time. The app also enables the activation of video recording via a linked phone to capture footage of a seizure, including the moments before and after the event, which is also logged in an electronic seizure diary.

A caregiver requires a separate Companion app to be installed on their smartphone for notification purposes. Suitable for ages four upwards, use of this device can improve understanding of epilepsy at school and provides an insightful seizure history and provides data on frequency and duration of seizures useful for preparing epilepsy management care plans and for medical consultations.

1 Year Basic Package without android smartphone \$1220; 2 Year Basic Package without smartphone \$1830; 1 Year Value Package with smartphone \$1485, 2 Year Value Package with smartphone \$2095. Epihunter and subscription intro offer for \$490 without smartphone including GST with 2 months' access included.

## Emfit Epilepsy Safe-Bed Sensor

(loan for use by EWA members)

RRP \$1,019-\$1,496

[epiassist.com.au](http://epiassist.com.au)  
NDIS registered



The Emfit Epilepsy Safe-bed Sensor is a night bed mat sensor which detects bedtime tonic-clonic seizures through a thin film ferroelectric sensor which can be placed under or on top of the mattress\*. It is suitable for children and adults who are at risk of a convulsive seizure, or of falling out of their bed.

The sensor detects fast, abnormal movements which may occur during the night, and it will sound a high frequency alarm if these movements continue past a preset amount of time, or an alert can be sent to an external personal pager or Life Minder pendant.

This device can also alert a caregiver when the person leaves the bed via a fall or if not returning to their bed within a given time (feature can be disabled).

An additional pager is also available which has a maximum range of 200 metres to alert carers in larger homes who may not hear the audible alarm. For adults living alone, the sensor can be connected to a Life Minder device (via special cable) which can notify pre-programmed mobile phones to let loved ones know that a seizure or fall has been detected with a "Help me" SMS and Google map location.

There is battery backup for times of power failure.

\*Depends on mattress type.

## NightWatch Seizure Monitor

(loan for use by EWA members)\*

RRP \$2,615

[seizurealertaustralia.com.au](http://seizurealertaustralia.com.au)  
NDIS registered



The NightWatch Seizure Monitor is a wireless armband which monitors heart rate and motion while the wearer is lying in bed. When the NightWatch detects a seizure (by analysing heart rate fluctuations and movement) a warning is transmitted to a caregiver via a wireless signal to the armband's corresponding base station.

Users living alone can add an optional 4G GSM Module emergency button to be able to alert up to five nominated people via text message, phone call or email if the alarm is triggered from a possible seizure detection, or if the user presses the emergency button. (An additional cost of \$495 applies.)

NightWatch can be connected to the internet so you can obtain a readout of the wearer's heart rate and motion data, and the device can detect various types of seizures including tonic seizures, tonic-clonic seizures, hypermotor seizures and clustered myoclonic seizures.

It is suitable for both children aged four and above, and for adults.

The NightWatch device requires charging for two hours prior to use which provides 14 hours' charge. It can be linked to a free mobile app Helpilepsy which automatically logs all your detected epilepsy activity. The Helpilepsy app features a web dashboard for neurologists where the patient's data can be viewed - including seizures, medication and side effects.

Under certain circumstances Seizure Alert Australia may also offer a free month's trial of this device directly.

\*Conditions apply

## Medpage MP5V2 Specialist Monitor for Seizure Movement

RRP \$696

[doAbility.com.au](http://doAbility.com.au)  
NDIS registered



**This bed sensor is positioned under a mattress in readiness to detect any irregular activity and convulsive movements of tonic-clonic seizures during bedtime. Continuous twitching, irregular or convulsive movements are differentiated from normal sleeping activity and so trigger an alarm from the movement monitor.**

A built-in microphone helps detect crying or vocalisations before or during a seizure, and an alert is sent to a portable wireless pager in another room (two are supplied) when a seizure is detected.

This device has adjustable sensitivity to allow for bodyweight and mattress type. Adjustability allows each user to tailor alert thresholds based on the duration and intensity of seizure movements.

This bed sensor is best suited for older children (minimum weight 25kg) and adults who experience nocturnal tonic-clonic seizures.

Medpage also offers an alternative device for children who weigh under 25kg, the MP5-UT, which can also be used in cots.

## SAMi-3 Camera Sleep Activity Monitor

RRP \$685 - \$770  
(32gb or 128gb)

[seizurealertaustralia.com.au](http://seizurealertaustralia.com.au)  
NDIS registered



**The SAMi-3 Sleep Activity Monitor camera for individuals, parents and caregivers is a wireless video camera with infrared illuminators which watches for unusual movements at night which could be due to sustained tonic-clonic seizures.**

The monitor provides realtime video-based movement detection and recording and works with an Apple iPod, iPhone or iPad running the free customisable SAMi app.

The app analyses video recordings for unusual activity. When an unusual event is detected an audible alarm alerts caregivers to these abnormal movements so it's possible to see and hear what is happening. Recordings can be reviewed and shared with doctors.

SAMi is available with or without a dedicated wifi router.

## Nellcor™ Bedside SpO<sub>2</sub> Patient Monitoring System

RRP \$2,650

[seizurealertaustralia.com.au](http://seizurealertaustralia.com.au)  
NDIS registered



**This device may detect changes in heart rate or blood oxygen decline, which may be experienced during or after certain seizure activity, in order to enable intervention by caregivers.**

The monitoring system displays realtime blood oxygen saturation levels (SpO<sub>2</sub>) and pulse rate measurements with SatSeconds alarm management – analysing the severity and duration of any blood oxygen desaturation event, or heart rate variation. Caregivers can be alerted by an alarm if such an event is detected.

There is a Homecare Mode, and a Sleep Study Mode enables the dimming of the LCD display and silence alarms to prevent disruption of sleep. There are also various adult, child and baby modes with on-screen help messages and a jog dial interface.

The device is portable with a built-in handle and it has a 96-hour trend memory.

*Sensor wrap replacements are also available from \$70.50 for a pack of 12 up to \$245 for a pack of 100.*

## Owlet Smart Sock 3 & Smart Sock 3 Plus (+ App + base station)

RRP \$449.99 - \$549.99

[owletcare.com.au](http://owletcare.com.au)



**This children's monitor tracks a child's heart rate, blood oxygen level and sleep trends. Live readings can be viewed in the free Owlet App.**

It's possible to view monitor readings in realtime - the total number of hours slept, number of wakings, and overall sleep quality.

The base station glows green when a baby's or young child's readings are considered normal. A caregiver is notified with flashing red lights and sound notifications if oxygen level is detected as too low below preset levels, or if heart rate is too high or low, which can be associated with some seizure types.

The Owlet Smart Sock 3 fits most children up to 18 months old, or up to 13.5 kg. The Owlet Smart Sock Plus and Smart Sock Extension Pack include fabric socks which fit children up to five years, or up to 25 kg.

Wireless charging provides eight-hour battery in 20 minutes and 16-hour battery in 90 minutes.



## Baby & Child Monitors



If a seizure alert technology device as detailed here in this Epilepsy WA booklet is not practical to trial or purchase, you may consider opting (dependent on doctor's advice) to use a baby monitor as a listening device or movement sensor as a stand alone device, or in addition to one of the devices listed.

These monitors can be purchased at differing price points, and from a variety of retail outlets and online stores.

Some baby monitors such as the Angelcare range for instance now include video and movement detection.

Please note that these are not purposely designed as a seizure alert device but they may be useful to amplify the sounds of a seizure occurring if the seizure results in noise creation.

In addition, some people opt to use baby monitor devices in conjunction with a seizure alert device for any age user, to help amplify the sound of any alarm for increased peace of mind.

We encourage consumers to compare products and research the capability around any baby monitor or seizure alert device they purchase in advance.

## Life Minder Fall Detector

Alarm + SIM card

RRP \$425

(Includes \$25 value SIM card.  
Optional wrist strap \$27)

[lifeminder.com.au](http://lifeminder.com.au)  
NDIS registered



The Life Minder automatically detects falls, such as those which may be associated with tonic-clonic seizures and atonic seizures.

Activation of the alarm depends on the height and angle of the fall. A duress button can be pressed if the person experiences an aura in advance of a generalised seizure.

This device can alert up to eight nominated people by sending a text message containing a Google map showing its location - accurate to within two metres. It will automatically call the telephone numbers of up to eight nominated support people, until a human response is received.

The Life Minder has hands-free built-in two-way speech, allowing caregivers to have direct communication with the wearer. The device is water-resistant and attaches to a wristband, belt clip or neck lanyard.

Fully charged battery life is up to seven days. When the battery gets as low as 30 percent it will send a low battery message to caregiver mobiles.

## Guardian Lingo Safety Pendant

& Guardian MediFone Personal Alarm

RRP \$419 - \$519

[guardiansp.com.au](http://guardiansp.com.au)



The custom programmed Guardian Lingo is a 4G safety pendant which audibly announces what's happening in the event of a fall which may be associated with a seizure/s with voice prompts and then calls caregivers on the wearer's behalf.

The Guardian MediFone personal alarm is custom programmed to the user and enables the speed dialling of any of the user's eight emergency contacts. There is also a Guardian Rova personal alarm available for users in more remote, regional or rural areas.

*For the Guardian Lingo there are monitoring alert service options to choose from – either with SIM fees or with professional monitoring (\$37 monthly). There are also optional accessories such as a wrist strap or belt clip and shower bag for \$10 each.*

*Professional monitoring is available as another option for the Guardian MediFone for \$31 a month, and optional accessories such as a wrist strap or belt clip and shower bag can also be purchased for \$10 each.*

## SOS SureSafeGO PLUS 4GX

Medical Alert SmartWatch with Fall Detection

RRP \$479

[personalalarms.net.au](http://personalalarms.net.au)  
NDIS registered



This wearable mobile smartwatch device has an automatic fall detection alarm for those experiencing tonic-clonic or atonic seizures, and also features an SOS button which may be useful when experiencing an aura.

The water-resistant SureSafeGO can alert up to five emergency contacts about a fall or when a call for help is detected who will be sent a Google Maps location with an SMS alert.

In the event of a fall the showerproof smartwatch will call each nominated number in order to enable two-way communication.

There is built-in GPS tracking, and also a no movement alarm if the wearer is detected not moving for a set period of time and a Find Me Function via a text request.

*The device comes with a yearly Telstra SIM card which covers all emergency activations, and costs \$40 a year after the first 12 months.*

## SeizAlarm App for IOS

Free for basic function  
RRP \$223 annually

[seizalarm.com](http://seizalarm.com)



**This iPhone and Apple Watch app enables those with epilepsy to alert emergency contacts automatically when convulsive seizure-like motion is detected or manually if they need immediate help or think they might need help soon.**

It is suggested that using the Apple Watch option may be more accurate and it also allows users the option of heart rate-based detection (not available on iPhone).

Emergency contacts will receive a text message, email and phone call letting them know the user needs help, with the GPS coordinates of where the user is located. The user has control over which contact methods are used for each contact. The help request button should be used if users feel the need for immediate assistance or the time delayed help button can be used if users have frequent mild to moderate auras (focal aware seizures) which do not always result in tonic-clonic seizures.

Using this button starts a timer and if the delayed help request is not ended manually by the user after a pre-set period, then a help request is sent to emergency contacts. This option can also be used if the user believes they are experiencing any other symptoms believed to be a precursor to a seizure.

*There is no cost for this Seizure Detection and Help Request Service App, but there is a subscription (approx \$22.30 AUD monthly - \$223 AUD annually dependent on US exchange rates) for seizure detection and the help request service.*

*(Download via the Apple App Store. All apps should only be considered as one part of an overall risk reduction strategy.)*

## My Medic Watch App for Android and IOS

Free 30-day trial

[mymedicwatch.com](http://mymedicwatch.com)



**This app runs on Apple and Android smartwatches. It aims to automatically detect falls or generalised tonic-clonic or atonic seizures, and all caregivers can be sent updates of progress.**

If the My Medic Watch app detects a seizure or fall it notifies caregivers, providing details of the individual's location. Each alert recipient can send a response advising whether or not they are able to assist, which is forwarded to both the individual and the other caregivers.

If the smartwatch is worn on the same side as the seizure side it may capture myoclonic seizures, and it might also capture a focal motor seizure.

Starter Plan – seizure and fall detection, manual alert function, push notification to up to three carers, data recorded and email support.

Plus Plan – as above with up to five caregivers notified, SMS messages, ability to access and share data.

Premium Plan – as above with an unlimited number of carers notified, call centre and data analysis.

*There is a 30-day free trial with this app and then a monthly fee for the detection and alert service with access to realtime data online with three subscription levels and a monthly fee: Starter (\$10), Plus (\$20), Premium (\$35). Alternatively there is an annual fee.*

*(Download via Google Pay or the Apple App Store. All apps should only be considered as one part of an overall risk reduction strategy.)*

## The Inspyre App by SmartMonitor

for Samsung or Apple Watches, Android and iPhones

RRP plans from **\$176.90** plus **\$29.73** activation

[smart-monitor.com](http://smart-monitor.com)

This movement detection and alerting monitoring app can be used with Samsung and Apple Watches, Android phones and iPhones. The watch detects repetitive shaking motion and the SmartWatch Inspyre then sends this information from the watch to the user's phone via Bluetooth. The phone then sends out alert notifications that abnormal motions have been detected to alert recipients.

Bronze, Silver and Gold plans offer motion detection, instant alerts, and event recording with secure access. They also all offer adjustable settings for both am and pm use - the user can determine the intensity and duration of the movement they would like the Inspyre to detect and alert upon.

**Bronze Plan** - single contact only.

**Silver Plan** - up to five contacts to receive a text message alert, one primary contact to receive a voice call, a Get Help button, and snooze option where the wearer can pause the movement monitoring.

**Gold Plan** - unlimited contacts receive a text message alert, one primary contact will receive a phone call, GPS location of the individual in the text of the alert, medication reminders, a snooze option, symptom reporting, and heart rate data recording during an event.

Based on current US exchange rates approx. **\$29.73 AUD** Activation Fee plus annual service fee (choice below)

Annual Service Fee from:

Bronze	<b>\$176.90</b>
Silver	<b>\$355</b>
Gold	<b>\$712</b>

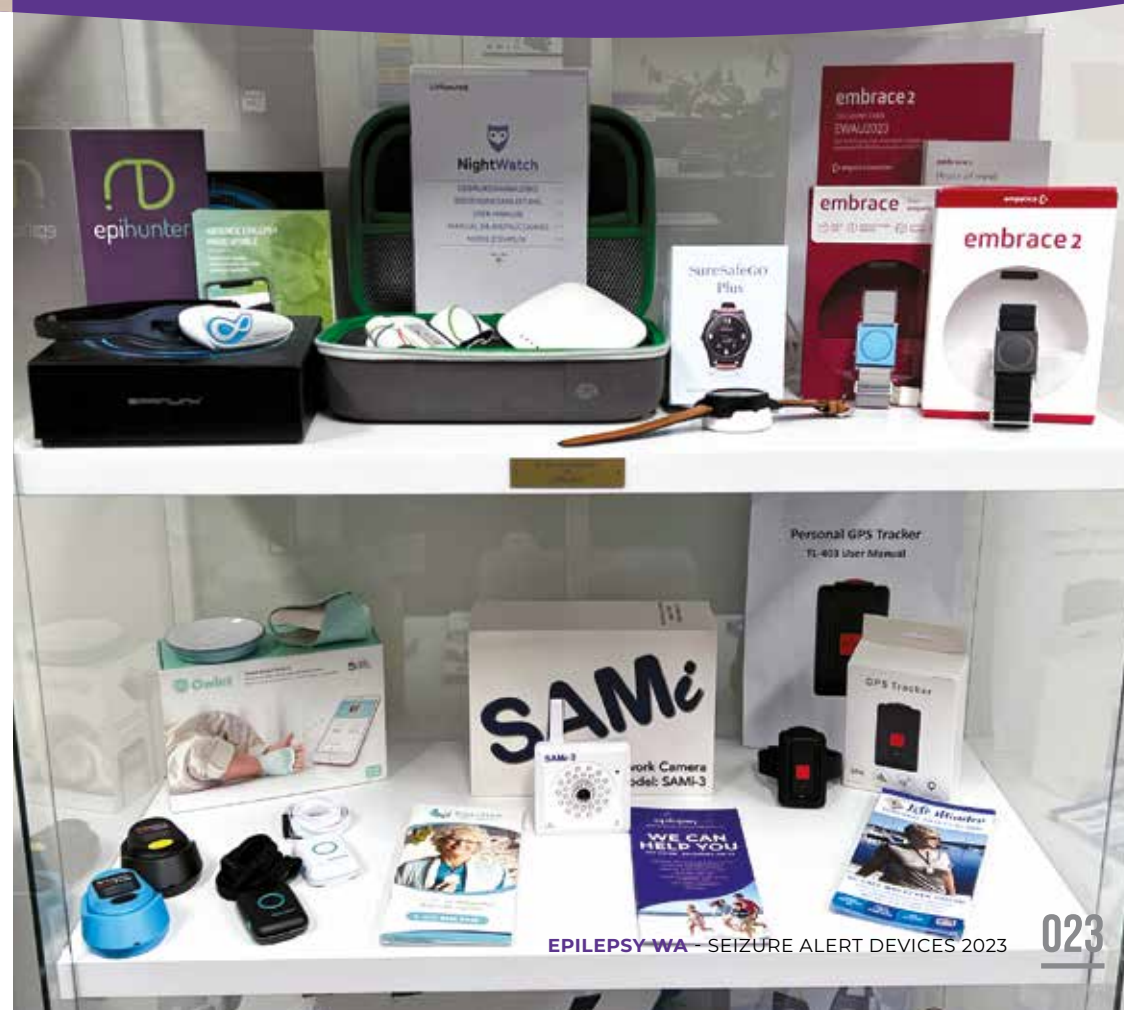
(Download via Google Play or via Apple App Store. All apps should only be considered as one part of an overall risk reduction strategy.)

## PRODUCT COMPARISON TABLE

Correct as at June 2023

**Please note:** All RRP prices listed here are subject to change, currency conversions as at June 2023 and are intended as a rough guide only. Consumers are encouraged to compare product information on relevant company websites and contact suppliers to confirm costings, shipping and item particulars before ordering directly from them.

For more information, please contact us on **1300 660 880**, or email us at **community@epilepsywa.asn.au**



Product	Cost	Type of Product		Seizure Type Intended to Detect		When to Use		Alert Sent to Carer's Phone	GPS Location Sent	Person Can Send Manual Alert	Where to Buy/Trial
		Device	App	Convulsive	Non-Convulsive	Day	Night				
<p><b>Embrace2 by Empatica</b> This wearable device is designed to detect tonic-clonic seizures and via its Alert App alert a caregiver's phone via Bluetooth connection</p>	<p><b>\$373 AUD</b> approx. + subscription plan (from \$14.84 AUD approx. per month) 8% discount for EWA members Monthly or annual subscription fees available (Lite, Standard or Plus) Empatica may offer a 30-day trial directly Shipping extra</p>	Y	Y (Alert App & Mate diary App)	Y	N	Y	Y	Y	Y (with STD and PLUS plans, not LITE)	N	Empatica (US) empatica.com support@empatica.com
<p><b>EpiHunter</b> Headset seizure alert device which detects focal onset impaired awareness and absence seizures</p>	<p><b>\$1,220 - \$2,095</b> EEG headband and accessories included Choice of EpiHunter subscription packages with or without smartphone options</p>	Y	Y	N	Y	Y	N	Y Torchlight feature lights up	N	N	Seizure Alert Australia (Victoria) seizurealertaustralia.com.au info@seizurealertaustralia.com.au 0492 961 777
<p><b>Emfit Epilepsy Safe-Bed Sensor</b></p>	<p><b>\$1,019 - \$1,496</b> (mat + controller) Optional pager Includes shipping</p>	Y	N	Y	N	Y (Only if in bed)	Y	Y Alert sent to pager if purchase Can also be connected to a Life Minder	Y If connected to a Life Minder	N	Epi-assist (New South Wales) epiassist.com.au sales@epiassist.com.au 1800 684 422 (loan for use by EWA members, contact EWA on 1300 660 880)

Product	Cost	Type of Product		Seizure Type Intended to Detect		When to Use		Alert Sent to Carer's Phone	GPS Location Sent	Person Can Send Manual Alert	Where to Buy/Trial
		Device	App	Convulsive	Non-Convulsive	Day	Night				
<b>NightWatch Seizure Monitor</b> Wireless armband which monitors heart rate and motion while the wearer is lying in bed.	<b>\$2,615</b> Includes Shipping  One month's trial may be available	Y	N	Y	Y (may also detect atonic seizures, hypermotor seizures, clustered myoclonic seizures)	Y (Must be laying down horizontal)	Y	Y (4G option notifies up to five nominated carers via text, phone or email)	N	N	Seizure Alert Australia (Victoria) seizurealertaustralia.com.au info@seizurealertaustralia.com.au 0492 961 777 (loan for use by EWA members, contact EWA on 1300 660 880)
<b>Medpage MP5V2 Specialist Monitor for Seizure Movement</b> Under mattress sensor	MP5V2 <b>\$696</b>  MP5-UT <b>\$650</b> (for children)  Shipping extra approx. \$70	Y	N	Y	N	Y (must be laying down in bed)	Y	N Alarm sounds through provided pagers	N	N	Do Ability (Victoria) doability.com.au support@doability.com.au 1300 122 355
<b>Sami-3 Sleep Activity Monitor</b> Wireless infrared camera monitors sleep activity, sends alarm to caregiver	<b>\$685-\$770</b> (32gb or 128gb)	Y	Y	Y	N	Y (must be in bed)	Y	N (Alert sent to tablet)	N	N	Seizure Alert Australia (Victoria) seizurealertaustralia.com.au info@seizurealertaustralia.com.au 0492 961 777
<b>Nellcor™ Bedside SpO2 Patient Monitoring System</b> This device detects excessive heart rate or blood oxygen decline or complications and alerts caregivers.	<b>\$2,650</b>	Y	N	Y (if increase in heart rate, decrease in oxygen levels)	Y (if increase in heart rate, decrease in oxygen levels)	Y (Must be in bed)	Y (When asleep)	N	N	N	Seizure Alert Australia (Victoria) seizurealertaustralia.com.au info@seizurealertaustralia.com.au 0492 961 777

Product	Cost	Type of Product		Seizure Type Intended to Detect		When to Use		Alert Sent to Carer's Phone	GPS Location Sent	Person Can Send Manual Alert	Where to Buy/Trial
		Device	App	Convulsive	Non-Convulsive	Day	Night				
<b>Owlet Smart Sock 3 &amp; Smart Sock 3 Plus</b> This device tracks baby's heart rate and oxygen levels with realtime video and audio to caregiver's phone	<b>\$449.99 - \$549.99</b>	Y	Y	Y (If there's an increase in heart rate)	Y (If there's an increase in heart rate)	Y (When asleep)	Y	Y	N	N	Owlet Care (Victoria) owletcare.com.au customercare-us@owletcare.com 03 8512 0888
<b>Life Minder</b> Wearable pendant device which detects falls	<b>\$425</b> for the pendant, includes \$25 prepaid SIM card Includes shipping	Y	N	Y (Fall detection only)	N	Y	N	Y Sends SMS	Y	Y	Life Minder (New South Wales) lifeminder.com.au 1800 684 422 or 0414 492 222
<b>Guardian Lingo Safety Pendant &amp; Guardian Medifone Personal Alarm</b> Fall detection	<b>\$419 - \$519</b>	Y	N	Y (Fall detection only)	-	Y	-	Y	N	N	Guardian Safety Products (WA) guardiansp.com.au info@guardiansp.com.au 6336 9448
<b>SOS SureSafeGO PLUS 4GX SmartWatch with Fall Detection</b> Fall detector SOS alarm with GPS	<b>\$479</b> for the watch + \$40 per year for SIM after the first 12 months	Y	N	Y (Fall detection only)	N	Y	Y	Y Calls enable two-way communication Sends SMS	Y	Y	Sure Safe (Queensland) personalalarms.net.au info@personalalarms.net.au 1300 739 991
<b>SeizAlarm</b> An iPhone and Apple Watch app which alerts emergency contacts automatically when seizure-like motion is detected or manually if a person needs help	<b>Free two-week</b> trial of alert service. Also available is a seizure detection and help request service: \$22.30 AUD approx. per month or \$223 AUD approx. a year	N	Y	Y	N	Y	Y	Y	Y	Y	seizalarm.com Download via The Apple Store (The App Store) 13 36 22

Product	Cost	Type of Product		Seizure Type Intended to Detect		When to Use		Alert Sent to Carer's Phone	GPS Location Sent	Person Can Send Manual Alert	Where to Buy/Trial
		Device	App	Convulsive	Non-Convulsive	Day	Night				
<p><b>My Medic Watch</b> Compatible with Apple and Android smartwatches. It automatically detects falls or seizures and sends alerts to caregivers</p>	<p><b>Free 30-day trial</b> Monthly fee for the detection and alert service Subscription levels: Starter \$10 Plus \$20 Premium \$35 Alternatively annual fees from \$100-\$350</p>	-	Y	Y	N	Y	Y	Y	Y	N	<p>My Medic Watch (NSW) mymedicwatch.com hello@mymedicwatch.com Download via Google Play Store or The Apple Store (The App Store) 13 36 22</p>
<p><b>Smart Watch Inspyre</b> A movement detection and alerting monitoring app which works with Samsung and Android phones, Apple Watches and iPhones</p>	<p>Activation Fee: <b>\$29.73 AUD</b> approx. plus annual service fee  Annual service fees from: Bronze \$176.90 AUD Silver \$355 AUD Gold \$712 AUD</p>	Y	Y	N	Y	Y	Y	Y	Y (with silver and gold plans)	Y (with silver and gold plans)	<p>Activate via Smart Monitor (US) smart-monitor.com info@smart-monitor.com</p>





SUPPORTING WESTERN AUSTRALIANS LIVING WITH EPILEPSY

PHONE

**1300 660 880**

EMAIL

**COMMUNITY@EPILEPSYWA.ASN.AU**

ADDRESS

**THE NICHE**

11 ABERDARE ROAD, NEDLANDS WA 6009



FACEBOOK

**FACEBOOK.COM/EPILEPSYWA**

WEB

**EPILEPSYWA.ASN.AU**



Supported by the Department of Health



Government of **Western Australia**  
Department of **Health**